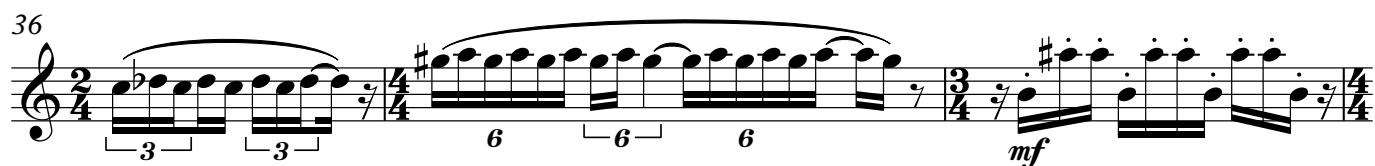
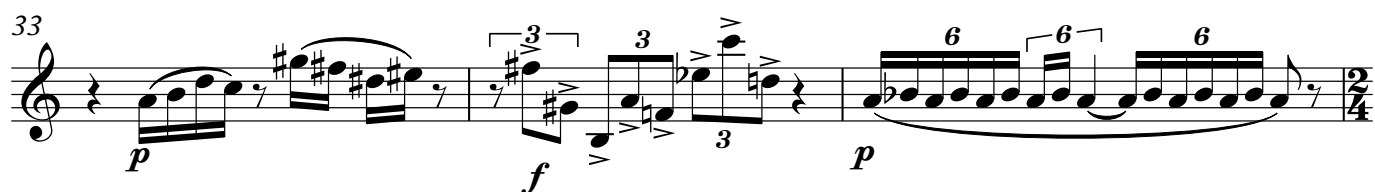
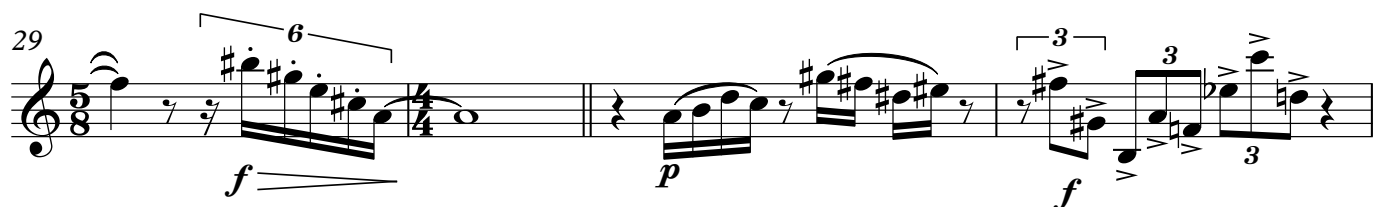
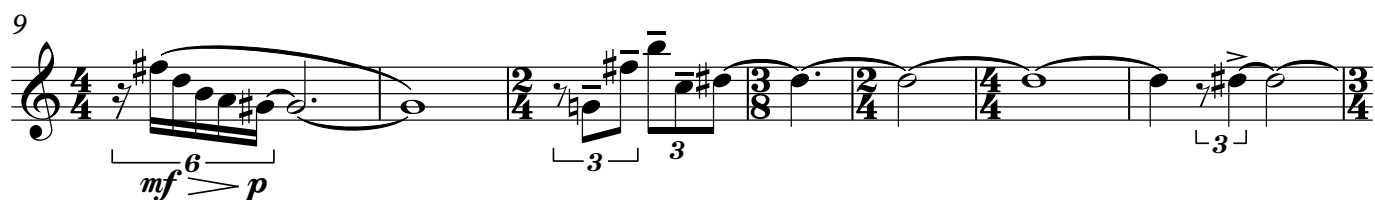
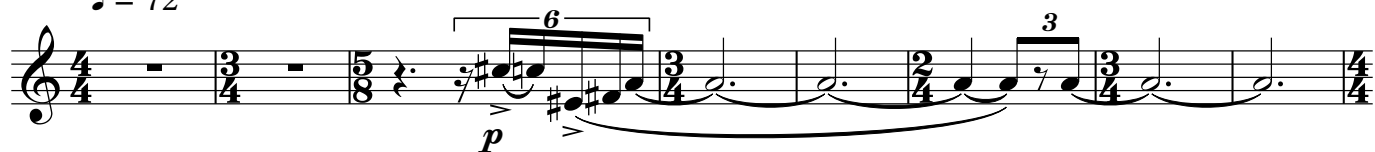


kaleido_scape

David Kosviner

 $\text{♩} = 72$ 

42

p 6 6 6 6 6 3 6

44

f 3 3 *mf* *p* 6 6 6 6

47

f 3 3 *p*

50

pp 3 *pp* *p* 3 *pp* < <

56

< < *p* *p*

62

3 *pp* *p* 3 *mf* 3

68

pp 3 *p* 3

74

mf *p* *pp*

78

3 *p* 3

83

pp *p* *pp* *p*

88

pp *f* *sf* *p*

93

pp *p*

98

pp *p* *pp* *pp*

103

p *mf* *p* *mf*

108

p

112

ff *pp*

116

pp

119

121

p

126

131

mf *p*

This staff contains measures 126 to 131. It begins with a treble clef and a key signature of one flat. The time signature changes from 5/8 to 4/4, then to 3/4, and finally to 4/4. The music features a melodic line with various note values, including eighth and sixteenth notes, and rests. A triplet of eighth notes is marked in measure 127. Dynamic markings include *mf* (mezzo-forte) and *p* (piano).

132

137

p *pp* *p* *mf*

This staff contains measures 132 to 137. The time signature changes from 3/4 to 4/4, then to 3/4, and finally to 4/4. The music features a melodic line with various note values, including eighth and sixteenth notes, and rests. A triplet of eighth notes is marked in measure 137. Dynamic markings include *p* (piano), *pp* (pianissimo), and *mf* (mezzo-forte).

138

144

(ord.)

mf *p* *mf*

This staff contains measures 138 to 144. The time signature changes from 4/4 to 3/4, then to 4/4, and finally to 3/4. The music features a melodic line with various note values, including eighth and sixteenth notes, and rests. A triplet of eighth notes is marked in measure 144. Dynamic markings include *mf* (mezzo-forte) and *p* (piano). The word "(ord.)" is written above the staff in measure 140.

145

151

(ord.)

mf *p* *f*

This staff contains measures 145 to 151. The time signature changes from 3/4 to 4/4, then to 3/4, and finally to 4/4. The music features a melodic line with various note values, including eighth and sixteenth notes, and rests. A triplet of eighth notes is marked in measure 151. Dynamic markings include *mf* (mezzo-forte), *p* (piano), and *f* (forte). The word "(ord.)" is written above the staff in measure 147.

152

158

p *ppp* *p* *sempre*

$\text{♩} = 60$ $\text{♩} = 84$

This staff contains measures 152 to 158. The time signature changes from 4/4 to 3/4, then to 4/4, and finally to 3/4. The music features a melodic line with various note values, including eighth and sixteenth notes, and rests. A triplet of eighth notes is marked in measure 158. Dynamic markings include *p* (piano), *ppp* (pianissimo), and *p* (piano). The word "sempre" is written below the staff in measure 158. The tempo markings $\text{♩} = 60$ and $\text{♩} = 84$ are written above the staff in measures 152 and 158, respectively.

159

164

This staff contains measures 159 to 164. The time signature changes from 3/4 to 4/4, then to 3/4, and finally to 4/4. The music features a melodic line with various note values, including eighth and sixteenth notes, and rests.

165

170

This staff contains measures 165 to 170. The time signature changes from 4/4 to 3/4, then to 4/4, and finally to 3/4. The music features a melodic line with various note values, including eighth and sixteenth notes, and rests.

171

175

This staff contains measures 171 to 175. The time signature changes from 3/4 to 4/4, then to 3/4, and finally to 4/4. The music features a melodic line with various note values, including eighth and sixteenth notes, and rests.

176

181

This staff contains measures 176 to 181. The time signature changes from 4/4 to 3/4, then to 4/4, and finally to 3/4. The music features a melodic line with various note values, including eighth and sixteenth notes, and rests.